

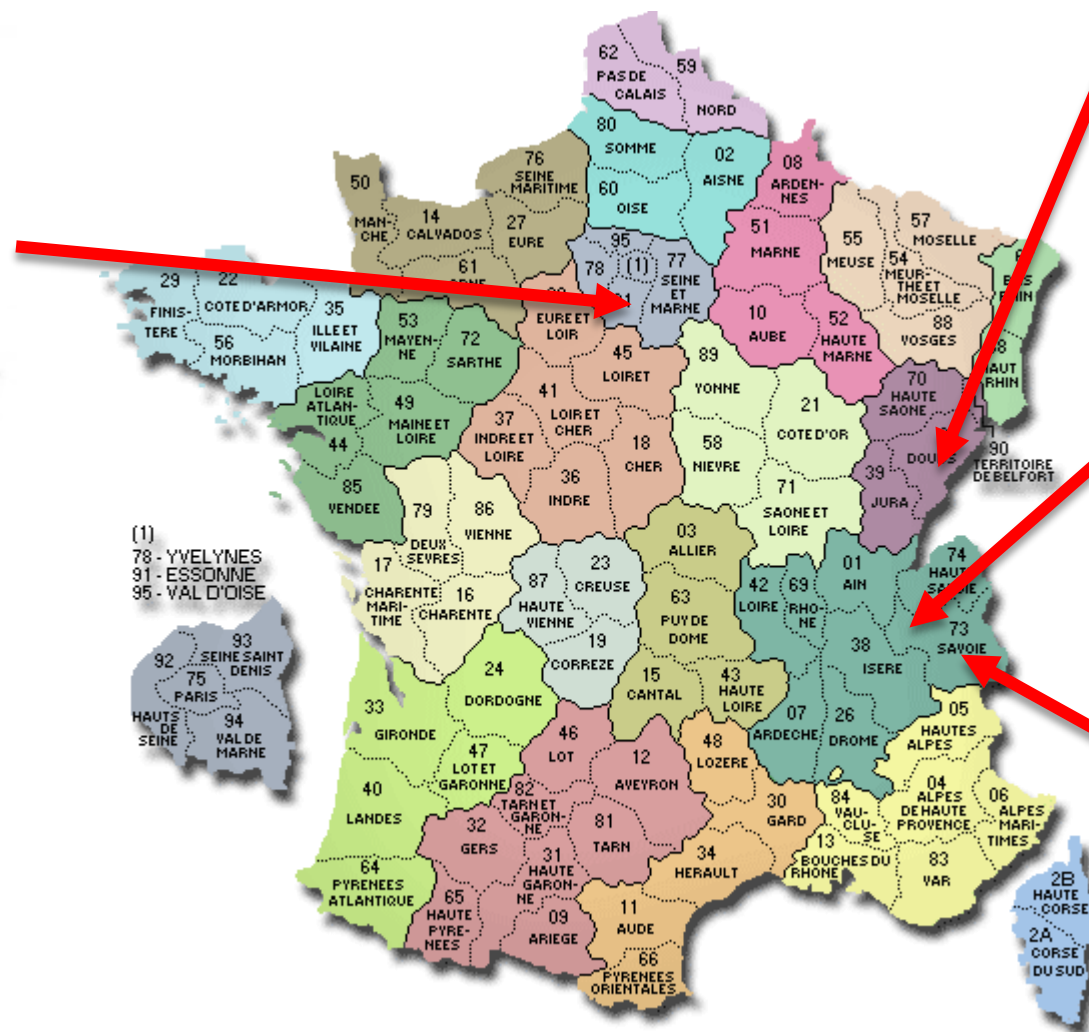
# Super-low background environmental radioactivity measurements for geosciences



Fabien Arnaud  
Délégué scientifique / Scientific deputy



3 CNRS research units are operating ultra-low background germanium detectors @ LSM for geoscience purposes



**CHRONO**  
**ENVIRONNEMENT**



# Usage statistics

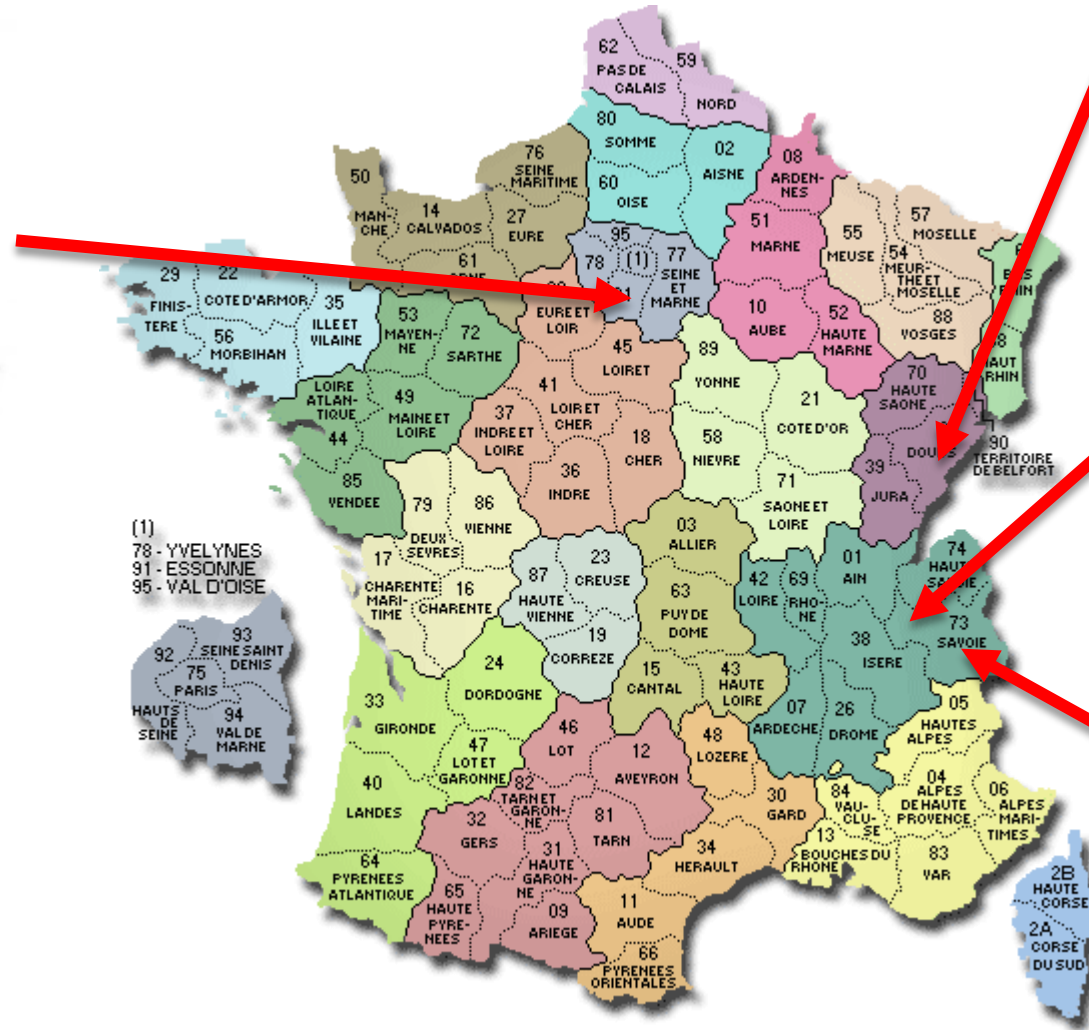
Unit	Main CNRS institute	Person in charge (science)	Person in charge (technics)	Dedicated soft money agent	Intern or collaboration / extern	Number of detectors	Number of sample / year	% of potential machine time usage
EDYTEM	INEE	Pierre Sabatier	Anne-Lise Develle	Alice Mollard	70%	2	566	ca. 100%
LSCE	INSU	Olivier Evrard	Irène Lefèvre	-	30%	3	134	30 %
Chronoenvironnement	INEE	Damien Rius	Christophe Mavon	-	66%	1	?	60 – 90 %

# Main achievements



LSCE

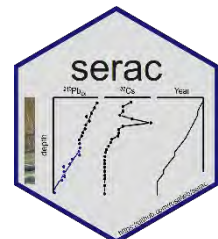
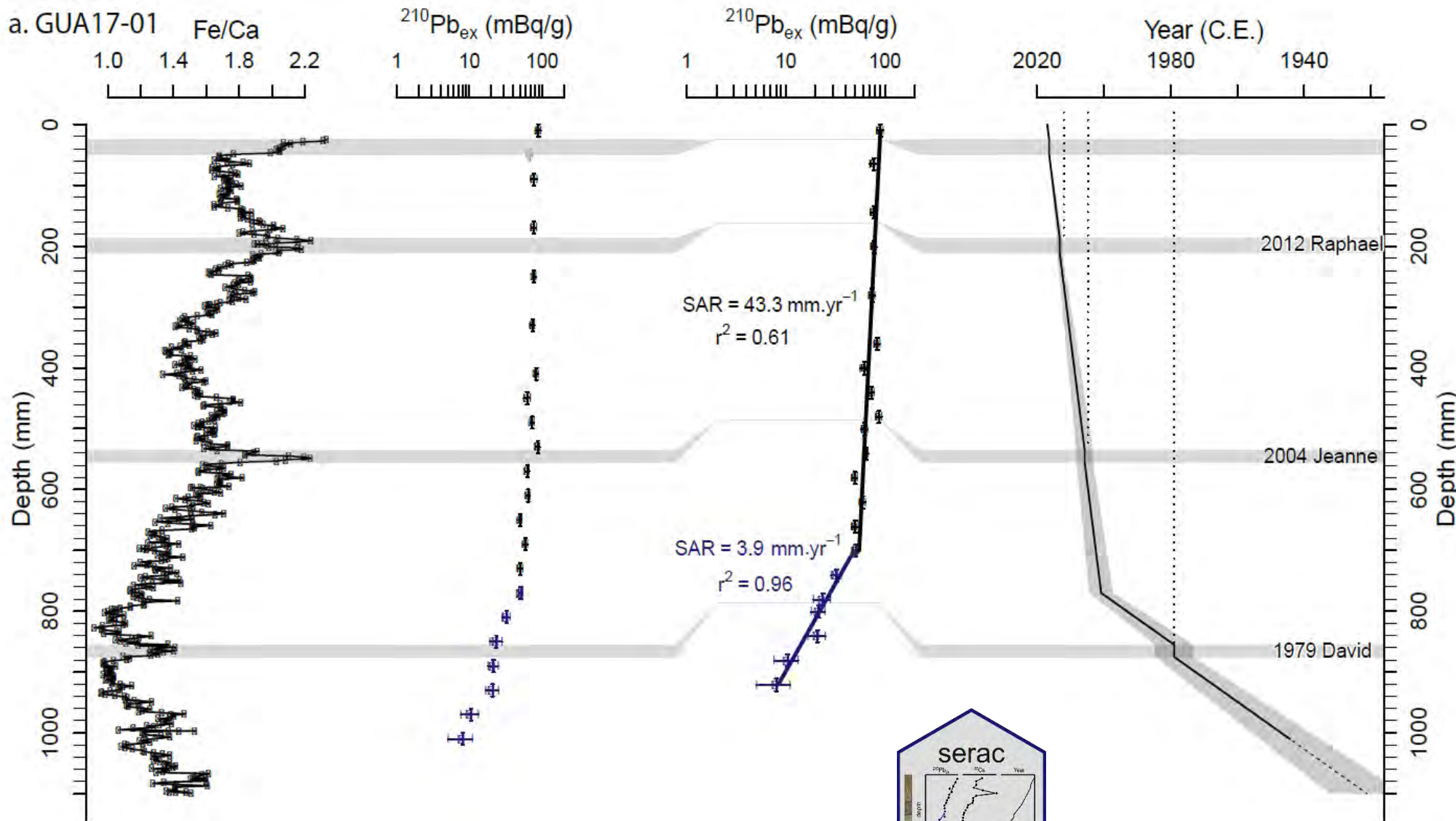
LABORATOIRE DES SCIENCES DU CLIMAT  
& DE L'ENVIRONNEMENT



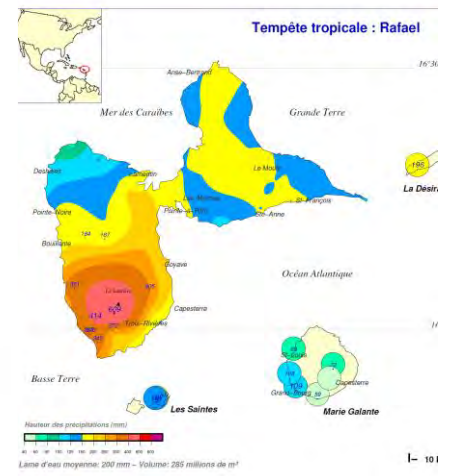
**CHRONO**  
**ENVIRONNEMENT**



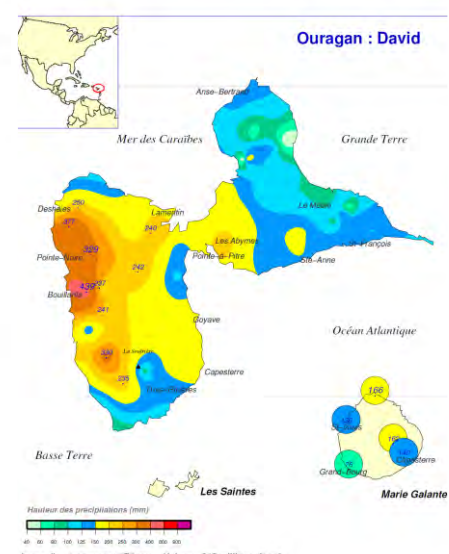
# Guadeloupe Island : dating hurricane-triggered deposits



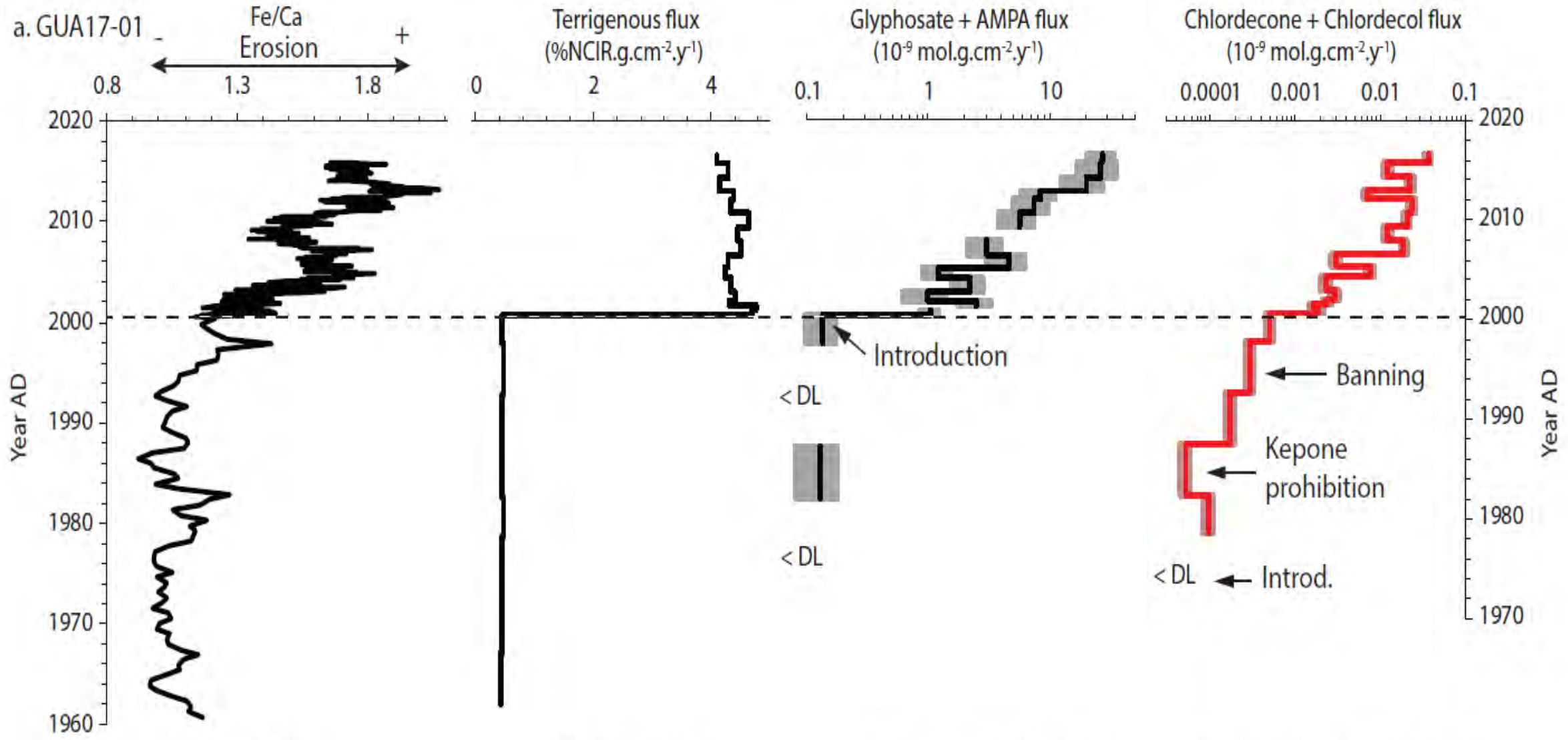
Cumul pluviométrique (mm) – Episode de 3 jours  
du 12 OCTOBRE 2012 à 8 h au 15 OCTOBRE 2012 à 8 h



Quantité de pluie (mm) en 1 jour  
du 29 AOUT 1979 à 8 h au 30 AOUT à 8 h



# Guadeloupe Island : linking pesticide usage and dispersal with erosion processes



## Evidence of Chlordecone Resurrection by Glyphosate in French West Indies

Pierre Sabatier,\* Charles Mottes, Nathalie Cottin, Olivier Evrard, Irina Comte, Christine Piot, Bastien Gay, Fabien Arnaud, Irène Lefèvre, Anne-Lise Develle, Landry Deffontaines, Joanne Plet, Magalie Lesueur-Jannoyer, and Jérôme Poulénard

Cite This: <https://dx.doi.org/10.1021/acs.est.0c05207>

 Read Online

## Scientific publication

## Mediatic and societal outcome



**L'impact de la chlordécone aux Antilles françaises**



# Inexorable land degradation due to agriculture expansion in South American Pampa



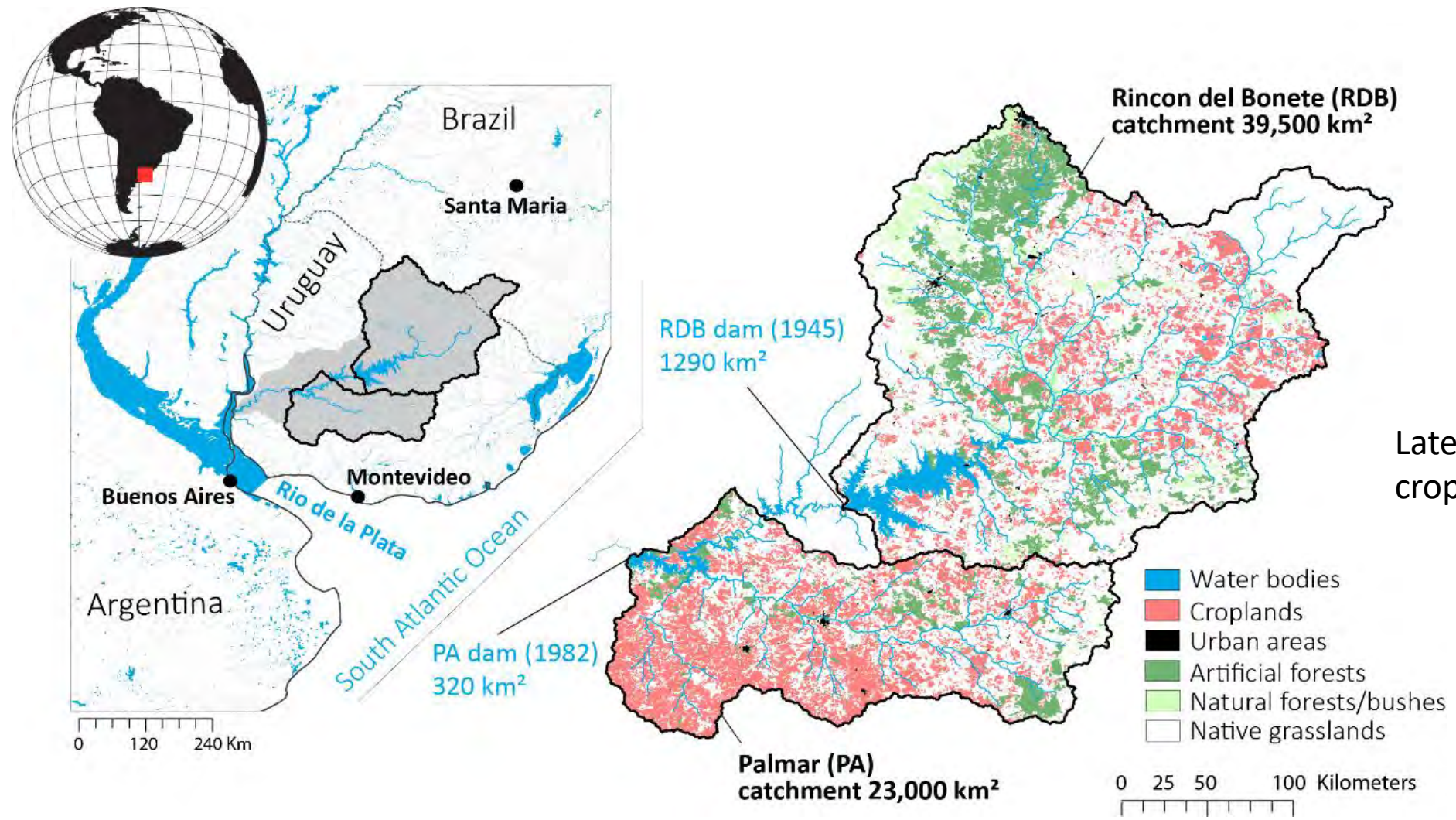
nature  
sustainability



**Agriculture expansion in the South American Pampa grassland led to an inexorable increase in land degradation (1982-2019)**

Anthony Foucher<sup>1</sup>, Marcos Tassano<sup>2</sup>, Pierre-Alexis Chaboche<sup>1</sup>,  
Guillermo Chalar<sup>3</sup>, Mirel Cabrera<sup>2</sup>, Joan Gonzalez<sup>2</sup>, Pablo Cabral<sup>2</sup>,  
Anne-Catherine Simon<sup>4</sup>, Mathieu Agelou<sup>4</sup>, Rafael Ramon<sup>5</sup>, Tales Tiecher<sup>6</sup>  
& Olivier Evrard<sup>1</sup>





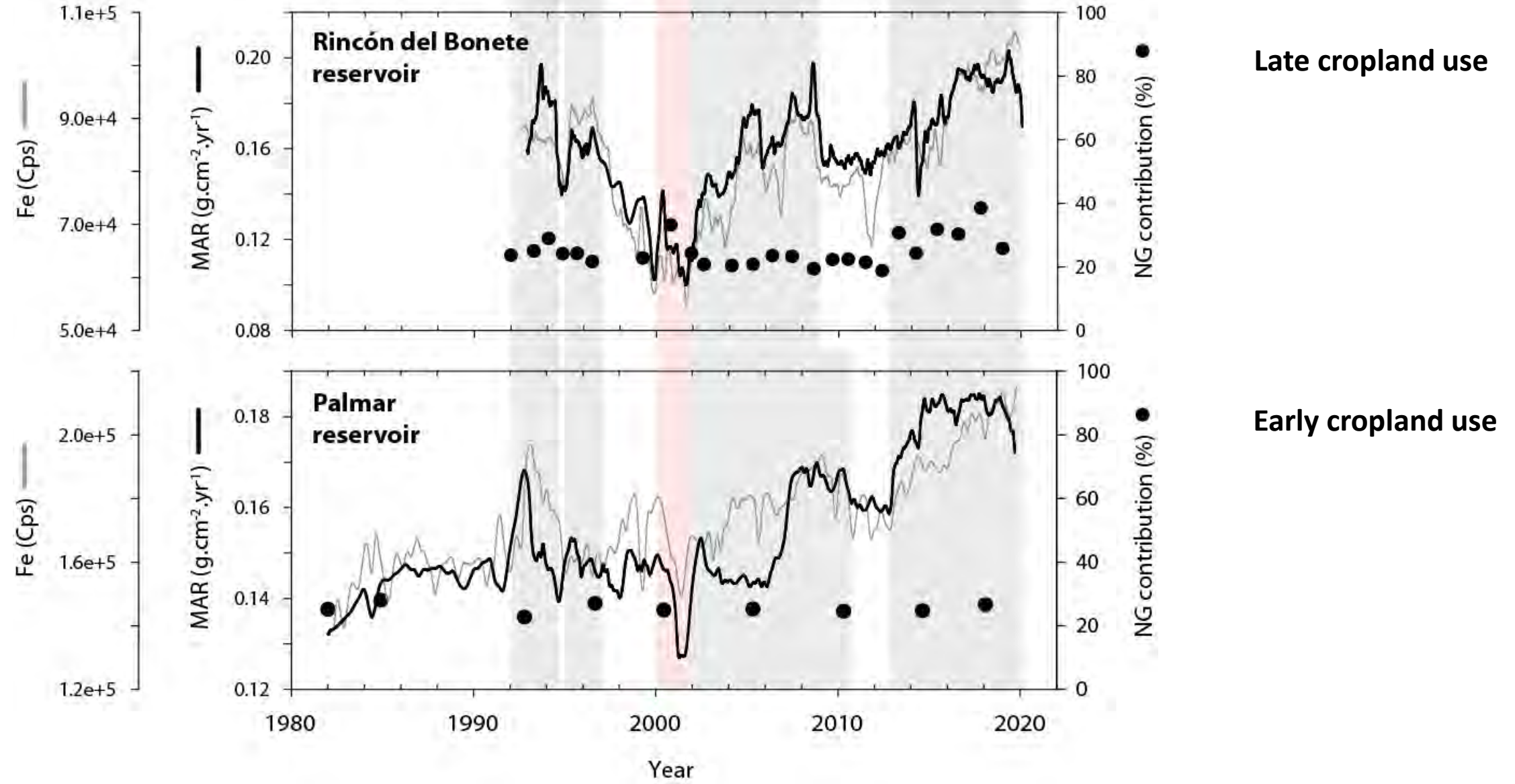
Late cropland use

Early cropland use

The surface area cultivated with soybeans has increased by 1,000% between 1990 and 2020 in Uruguay.

Eucalyptus plantation phase  
2. Economic crisis (2000-2002)

1. Second plantation phase  
3.



Late cropland use

Early cropland use

ARTICLE



<https://doi.org/10.1038/s41467-020-17682-8>

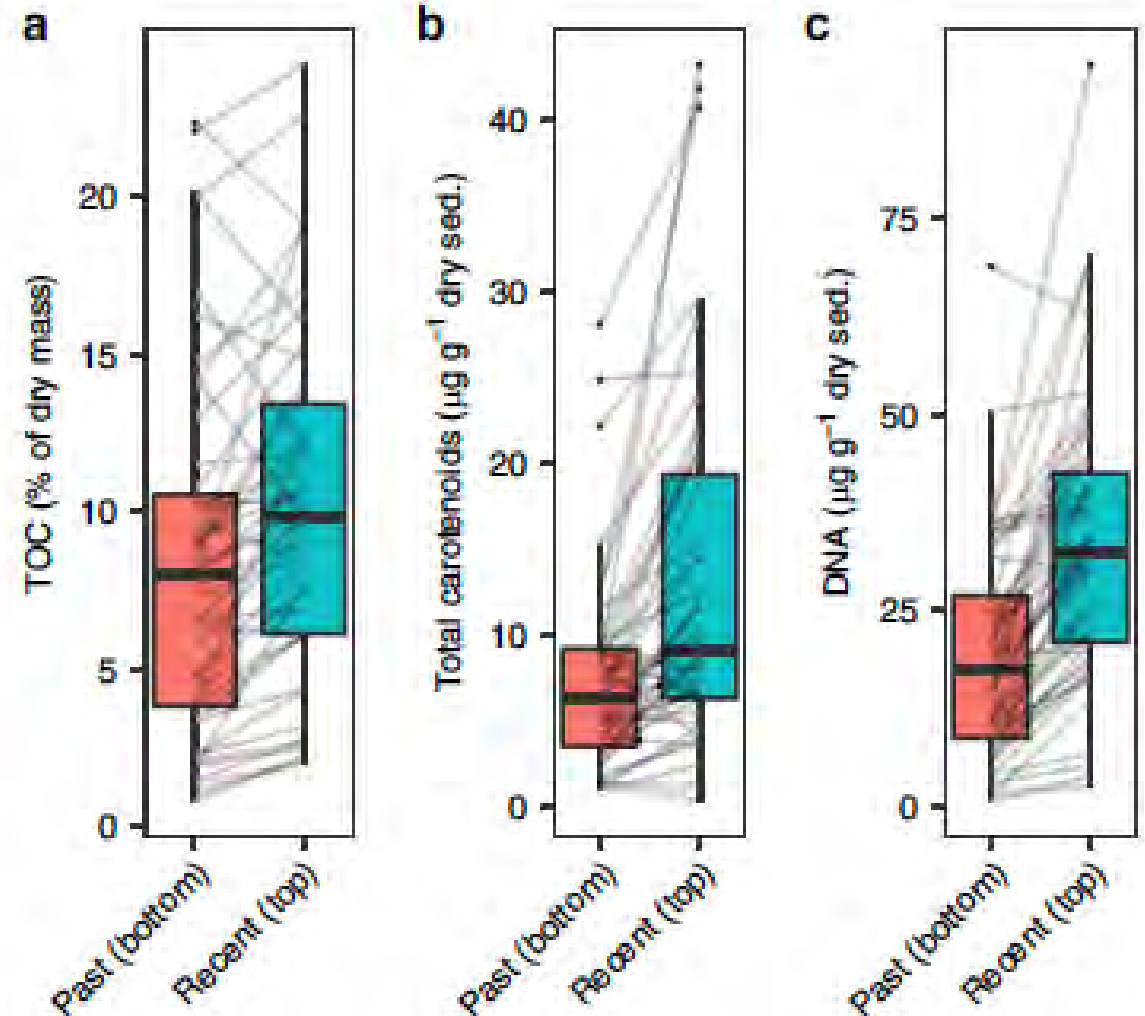
OPEN

# Assessing the response of micro-eukaryotic diversity to the Great Acceleration using lake sedimentary DNA

François Keck<sup>1,2</sup>, Laurent Millet<sup>3</sup>, Didier Debroas<sup>4</sup>, David Etienne<sup>5,2</sup>, Didier Galop<sup>6,7</sup>, Damien Rius<sup>3</sup> & Isabelle Domaizon<sup>1,2</sup>

## Synthetic eutrophication trajectories from 46 lakes

**Fig. 1 Differences between the recent (top) and past (bottom) sediment strata.** **a** Proportion of total organic carbon (TOC) in dry sediments ( $n = 46$  lakes), **b** concentrations of total carotenoid pigments expressed in  $\mu\text{g}$  per g of dry sediment ( $n = 44$  lakes) and **c** concentrations of DNA expressed in  $\mu\text{g}$  per g of dry sediment in the recent (top) and past (bottom) strata ( $n = 48$  lakes) of the sediment cores. Boxplots depict medians, first and third quartiles, and full ranges (bounded at  $1.5 \times$  interquartile range). Gray lines connect values from the same lake.



# Major ongoing programmes DEEP-C & CarboNium (PEPR FairCarbon > 1 M €)



“Le carbone dans les écosystèmes continentaux : leviers et trajectoires pour la neutralité carbone”



PEPR Faircarbon : 2 projets financés pour les 5 prochaines années

## Projet ciblé CarboNium

CarboN dynamic in the terrestrial- aquatic continuum

J. Nemery L.Gandois

## Projet Deep-C

Carbon sink or methane source – local to global scale assesment of lentic waters’ role in the climate system

J-P Jenny L. Millet

## Projet région Graduate School Transbio CARLA



## Projet OSU Stock-Car, convention PNR Jura ...



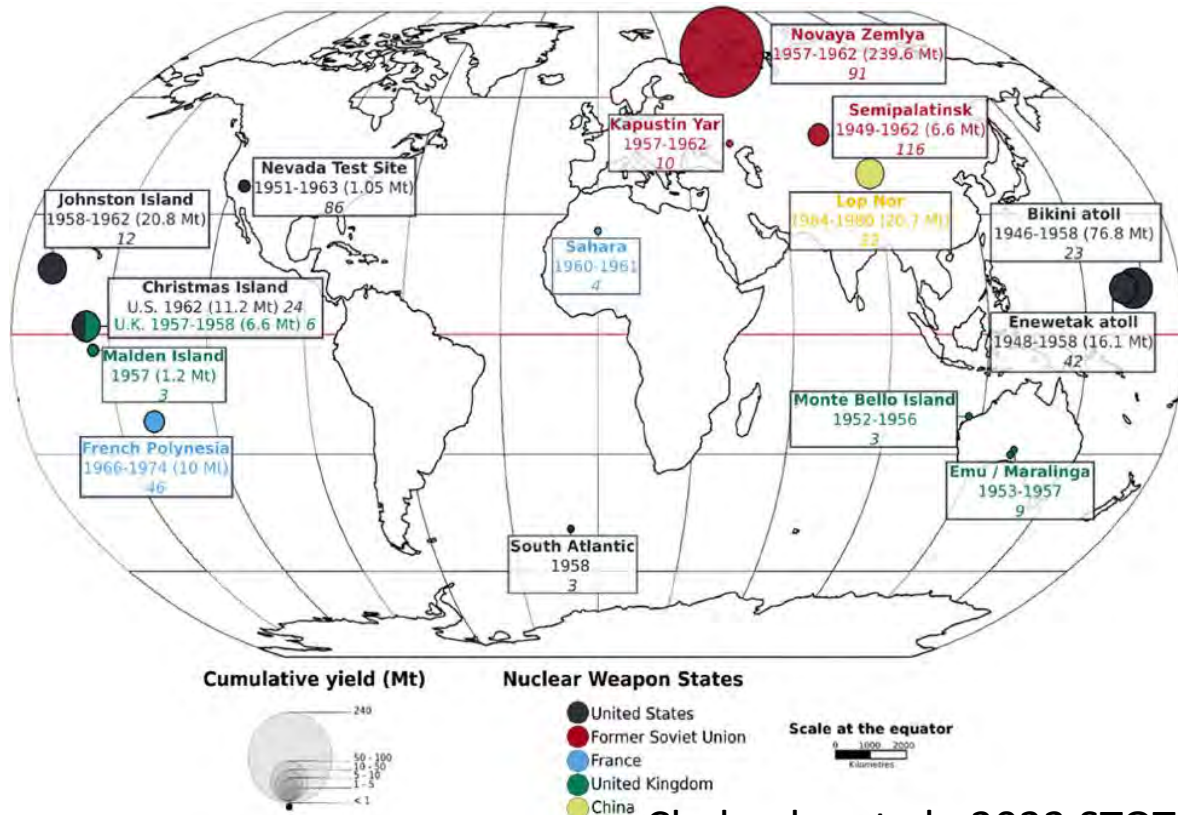
**Redefining  
and  
quantifying  
the role of  
lakes and  
soils in  
carbon  
storage**

# Major ongoing programmes

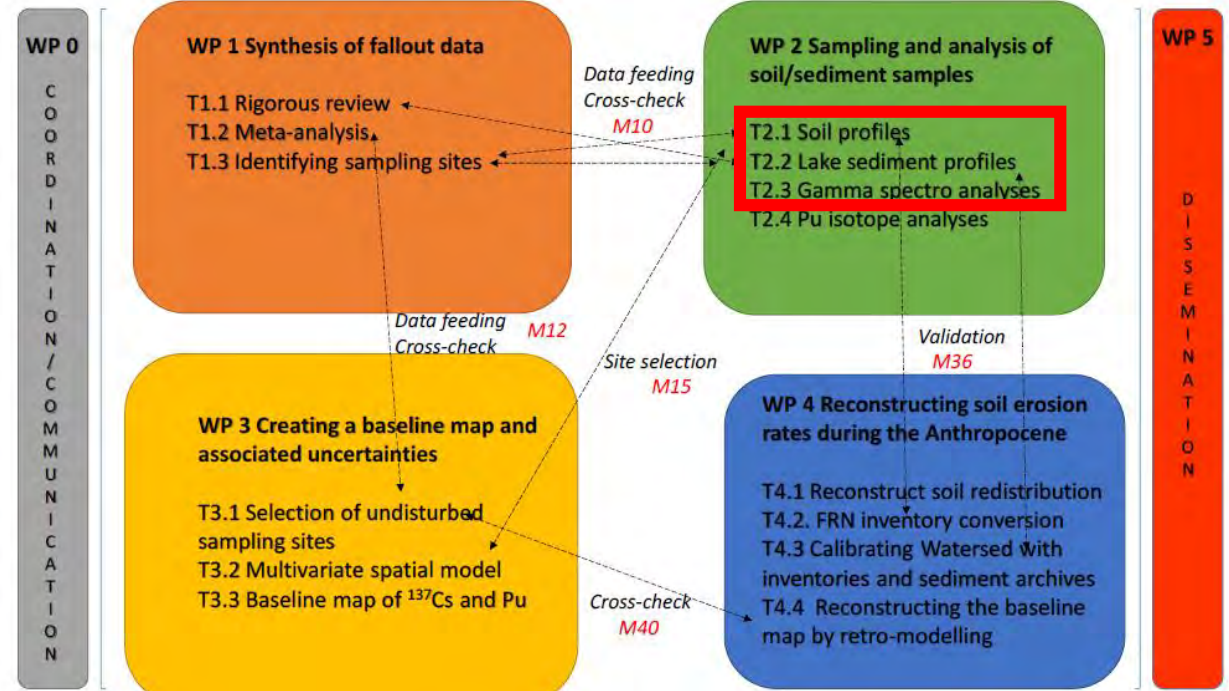
## AVATAR : A reVised dATing framework for quantifying geomorphological processes during the AnthRopocene (French-Swiss joint national programme)



- Southern hemisphere  $^{137}\text{Cs}$  fallout map
- Relative contribution of latter French bomb tests (Pu isotopes)
- Enhance the reliability and precision of radionuclide-based erosion reconstruction over large catchment areas



Chaboche et al., 2022 STOTEN



# Returns of experience

Unit	Comments (usage)	LSM strengths	LSM issues
EDYTEM			<ul style="list-style-type: none"> <li>- Errors in sample labelling</li> </ul>
LSCE	Mainly very low activity → lower potential number of samples / year	<ul style="list-style-type: none"> <li>- Low background</li> <li>- Dedicated staff support</li> </ul>	<ul style="list-style-type: none"> <li>- Lack of flexibility in sample counting time</li> </ul>
Chronoenviron.		<ul style="list-style-type: none"> <li>- Discussion with other users</li> </ul>	<ul style="list-style-type: none"> <li>- Degraded background (radon) and phonic conditions (detectors errors) since the onset of the common shielding</li> <li>- Users meeting late announcement</li> </ul>

# Potential of development

Unit	Structure/technique/ organisation	Science
EDYTEM	<ul style="list-style-type: none"><li>- Radon shielding tent and helium flux (lower background)</li><li>- Automatic sample robot</li></ul>	<ul style="list-style-type: none"><li>- Radium-226 excess in carbonaceous lake and marine sediment (dating span : 10 to 1000 years)</li></ul>
LSCE		<ul style="list-style-type: none"><li>- Very low activity and very small samples (efficiency gain)</li></ul>
Chronoenviron.		<ul style="list-style-type: none"><li>-</li></ul>

