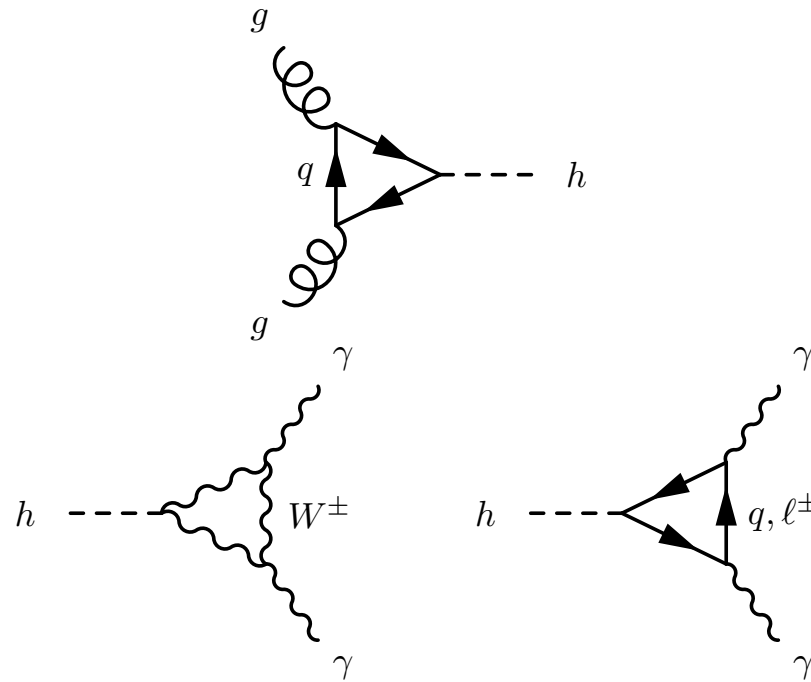


- **MUED:**
 - all particles propagate in the bulk
 - one extra dimension compactified on S^1/Z_2 orbifold
 - conserved momentum in 5th dimension \rightarrow conserved KK number
 - KK parity : dark matter, particle of level n pair produced
 - parameters : cut-off scale , R^{-1} , m_h
 - DM neutral : $m_h < 230\text{GeV}$ (otherwise charged Higgs LKP)
 - zero mode: SM particles \rightarrow tower a KK particles
 - level n : nearly degenerate spectrum : n/R

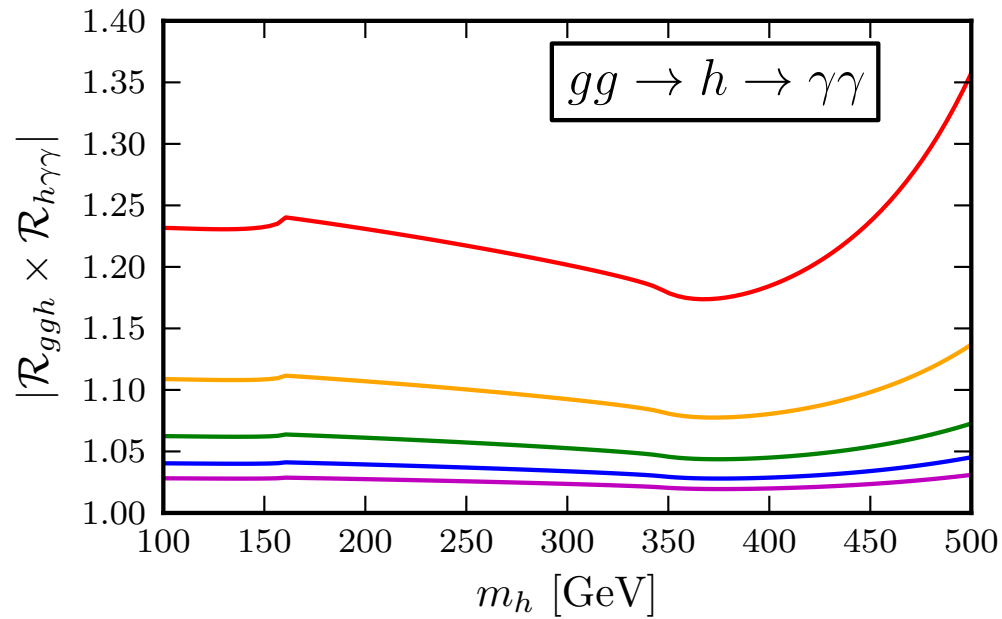
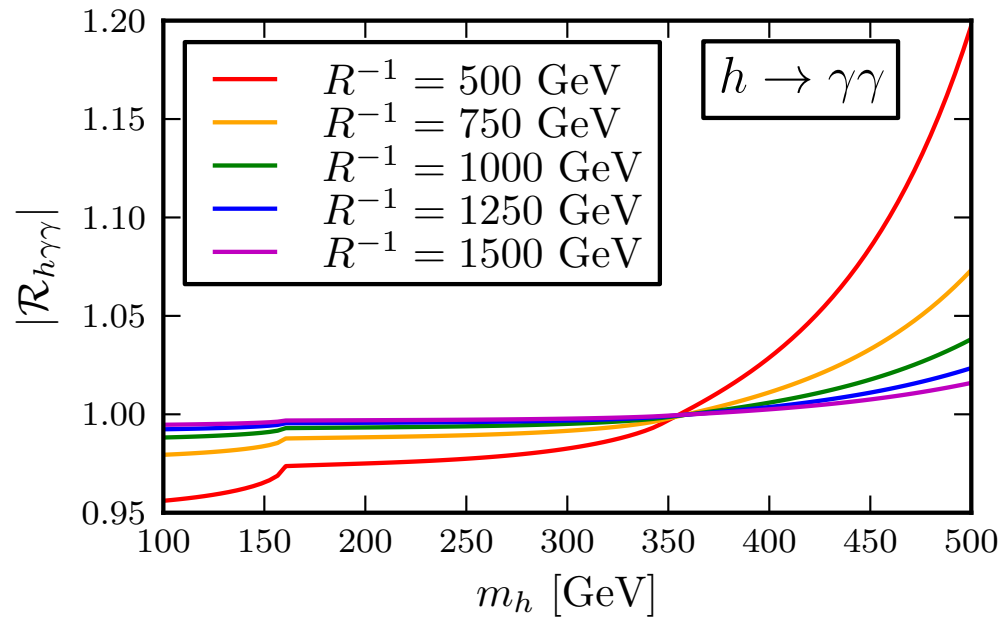


Contribution of KK particles in the loop same sign as SM

production : enhanced

interference top/W : some reduction in two-photon width

hWW partial width =SM --> signal enhanced



- CMS+ ATLAS limits-->

